

GEORGIA SMART COMMUNITIES CHALLENGE

Enabling Resiliency and Sustainability through
Academic Research and Public Sector Collaboration

Informational Session #1



6 APRIL 2020
12-1pm

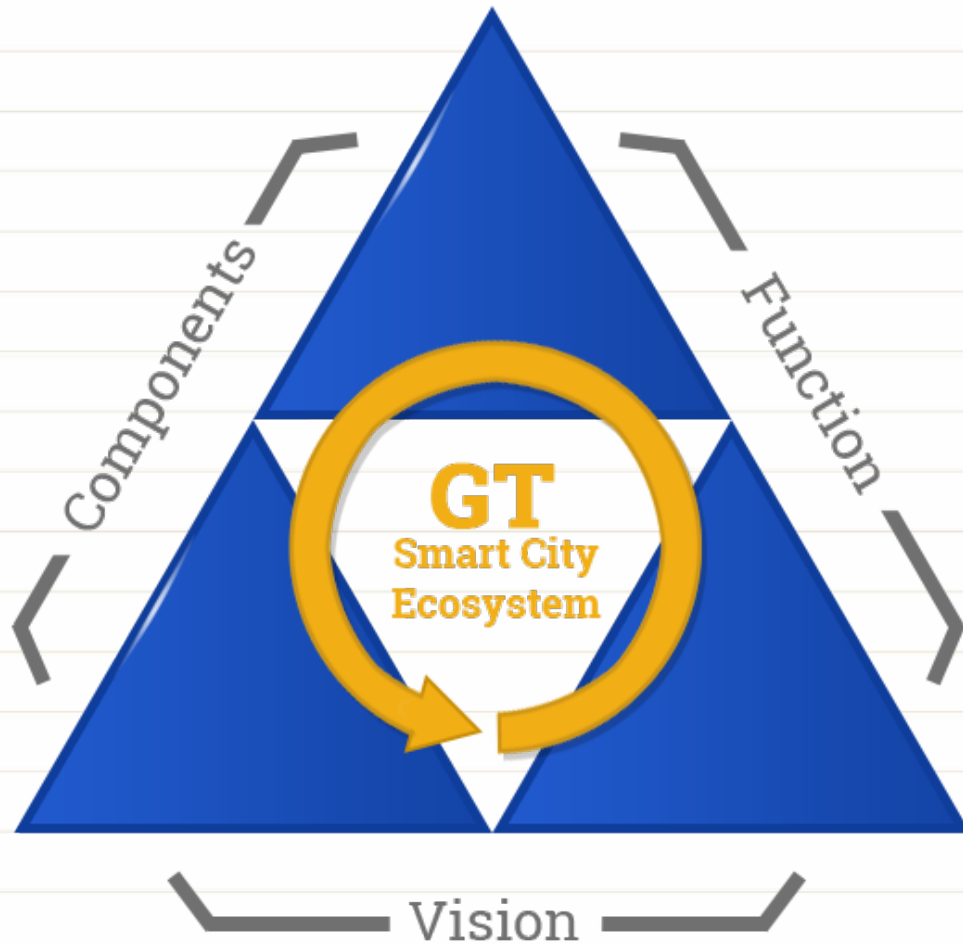
Social Media Tag
#GeorgiaSmart



Webinar Overview

- Georgia Smart
- Application Process
- Q&A

Smart Cities Framework



Mission

The **Georgia Smart Communities Challenge** is a grant challenge for communities of any size in the state of Georgia to:

**Empower communities to envision and plan for their
Smart and Connected Future**

To spur smart community development throughout GA

To position GA as a smart community leader

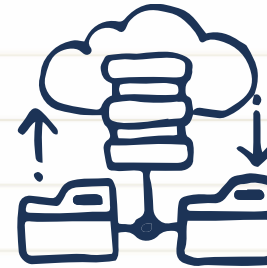
Build a workforce that can lead in technological advance and data-driven
decision-making

What is Georgia Smart?

Smart and connected communities rely on **people** and **data** to enable informed decisions **and create a sustainable smart process.**

This starts with a **research-led process** that builds on the fundamental scientific and technical expertise of academics and researchers.

Georgia Tech acts to **empower** communities in their journey becoming a smart community and while **building resilience for when the expected and unexpected occurs.**



Georgia Tech



Georgia Power



Atlanta Regional Commission



GA Smart Communities

City of Milton

Creating Stronger Communication
for Sustainable Results



City of Woodstock

Partnering with Autonomous
Vehicles for a Smart Corridor

City of Chamblee

Joining Together for a
Strategic SAV Program



Columbus Consolidated Government

Using Data Sharing
to Improve Infrastructure



City of Albany

Employing Data Analytics
for a Better Housing System



Gwinnett County

Connecting Tech for
Optimal Performance



Chatham County

Piloting Tools to Help Stakeholders
During Natural Disasters



Macon-Bibb Consolidated County

Giving the People Better Access
to Local Government



GA Smart Communities 2018 and 2019 Teams



GA Smart Value



1. Up to **\$100k** in grant funds
2. Up to **\$50k** in Georgia Tech research support
3. Cohort of fellow Georgia communities
4. Expert led workshops on smart cities topics
5. Smart Community Corps summer support
6. Marketing-communications outreach
7. GA Smart partners support and connections
8. Smart development network and journey.....

Smart Ecosystem

**Communities representing 2/3 of
Georgia population engaged**

1,100 Livestream views of the 2019 GA Smart Winners Announcement

500+ Attendees at GA Smart Workshops

5,000 Newsletter Subscribers

1000+ Webinar Views

50+ GT Researchers and professors profiled

Data

Diversity of Data Collected & Leveraged

- 10** years of utility and housing data in Albany
- 42** smart sea level sensors in Chatham Co.
- 15** Fire & EMS vehicles tracked in Gwinnett Co.
- 2** Multisensor Array of Things installed in Columbus
- Hundreds** of survey responses from citizens

GT Researchers



Diversity of Disciplines

School of Architecture

School of City and Regional Planning

School of Computer Science

School of Civil & Environmental Engineering

School of Earth & Atmospheric Science

School of Public Policy

Workforce Development

Smart Community Corps Dataworks

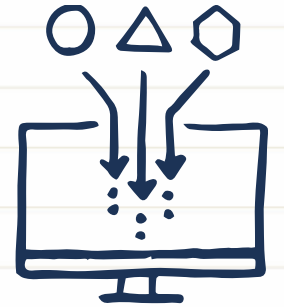
Summer funding

Student work on smart community projects

GT researcher mentorship

Microsoft | EPA | Community Foundation of Central Georgia

Center for Serve-Learn-Sustain | Center for Career Discovery & Development |
Student Government Association



Onward and Upward

Driven by People

30+ Community Stakeholder Engagement Meetings
\$2M+ in Project Continuation Funds
Education outreach with curriculum

Making it Happen
develop a smart process
together, we look at a set of
steps that focuses on a present
problem while looking for a
sustainable process that grows
and adapts over time.

Understand Your People.

Building a smart and
connected community
starts with the people
and understanding
their goals for their
community.

Identify the Data.

Data are central to the
smart and connected
community. A smart process
relies on knowing what data
you have, what data you need,
and how to connect the right
people to the right data.

Create Partnerships.

Partnerships are built
on a united vision and
strong understanding of the
roles and responsibilities
of the respective parties.
They are cemented on trust
and knowing the parties are
committed to the long run.

Through
stage
research
make the
and g
tech

Macon-Bibb Giving the People Better Access to Local Government

Macon-Bibb County has
several existing mobile
applications and browser-based
smart solutions, but these services
are currently out of reach of
economically disadvantaged
neighbors who lack access
to high-speed internet or
smartphone devices.
SmartNeighborhoodsMBC
promotes equity in economically
stressed neighborhoods by
placing Smart Kiosks in strategic
locations such as community
centers, libraries, recreation
and public buildings to help
underprivileged citizens
better access and engage local
government departments.

GEORGIA SMART COMMUNITIES CHALLENGE

Enabling Resiliency and
Sustainability through Academic Research and
Public Sector Collaboration



FIELD GUIDE

<http://gatech.bccdev.com/>

Partnerships
Working with partners
is a process to figure
out when to make
decisions as a project matures
and when to make
adjustments to different
needs to sustain in the long
term. Management needs to
be a careful transition.



Chatham Piloting To Help Stakeholders During Natural Disasters

Chatham County will design,
develop, and test a pilot sensor
network for measuring sea level
flood risk in order to inform
government officials and other
key stakeholders in real time
during natural disasters
and storms. This project
depends on the partnership
between different people:
community groups, local and
county government officials,
and those helping with K-12
education initiatives. The team
is conducting research with
help from Georgia Tech's Earth
and Atmospheric Sciences
department as well as the
Computing department. The
pilot network will help to improve
flood warnings, emergency
response action plans, and
prepare for future
disasters to serve

Georgia Smart Request for Proposals



Website:

<https://smartcities.ipat.gatech.edu/2020-georgia-smart-communities-challenge>

Official RFP is the **Georgia Smart Program Guide**

- Available on the website listed above in the *Important Information* section

Important Information

- Interested communities should review the [Georgia Smart Program Guide](#) and check our [Frequently Asked Questions](#) page for details about the 2020 challenge.
- Georgia Smart will sponsor a cohort of between 2 and 4 teams this year from the state of Georgia, each executing on their own project plan.
- Grant funding has been increased to up to \$100,000.
- Georgia Tech researcher funding has also been increased to up to \$50,000.
- Applicants must partner with a Georgia Tech researcher. Access a list of [GT researchers](#) available to partner with your community. Add your profile to our list of GT research partners by emailing us at sci2@gatech.edu.
- Applicants should use the Application Template to complete their application: [View](#) | [Download](#)
- Georgia Smart is accepting Pre-proposals this year in an effort to assist communities in connecting with Georgia Tech researchers. Applicants should use the Pre-proposal template available here: [View](#) | [Download](#)

Important Information

- Interested communities should review the [Georgia Smart Program Guide](#) and check our [Frequently Asked Questions](#) page for details about the 2020 challenge.
- Georgia Smart will sponsor a cohort of between 2 and 4 teams this year from the state of Georgia, each executing on their own project plan.
- Grant funding has been increased to up to \$100,000.
- Georgia Tech researcher funding has also been increased to up to \$50,000.
- Applicants must partner with a Georgia Tech researcher. Access a list of [GT researchers](#) available to partner with your community. Add your profile to our list of GT research partners by emailing us at sci2@gatech.edu.
- Applicants should use the Application Template to complete their application: [View](#) | [Download](#)
- Georgia Smart is accepting Pre-proposals this year in an effort to assist communities in connecting with Georgia Tech researchers. Applicants should use the Pre-proposal template available here: [View](#) | [Download](#)

- **Challenge Key Dates**

- ◆ **Challenge Launch: March 17th, 2020**
- ◆ **Informational Webinar (1st chance): April 6th, 2020 | 12pm-1pm**
- ◆ **Optional Pre-proposals Due: April 24th, 2020**
- ◆ **Informational Webinar (2nd chance): April 28th, 2020 | 12pm-1pm**
- ◆ **Applications Due: June 12th, 2020**
- ◆ **Winning Projects Announced: Summer, 2020**

RFP key requirements

- Led by **local government entity** in the state of Georgia and have a letter of support from a community leader.
- Include a **Georgia Tech researcher** with a related research project outlined
- Verify **documentation of source of funds** for the community match and provide the expected method for the in-kind match.

GT Research Partner Requirement

Connect with a GT researcher

- Part of the Proposal team
- **Submit a Pre-proposal by April 24th**
 - Pre-proposal submission details are outlined in the Program Guide
- **Review the research faculty list:**
<https://smartcities.ipat.gatech.edu/research-faculty>

RFP Recommendations

- Represent **community partnerships** and include letters of support or letters of understanding
- Address a **community need**, be inclusive, and think long term.
- NOT solely purchase technology/ hardware/capital assets, but can use funds to purchase such devices for the purposes of completing pilot studies of relevant technology.

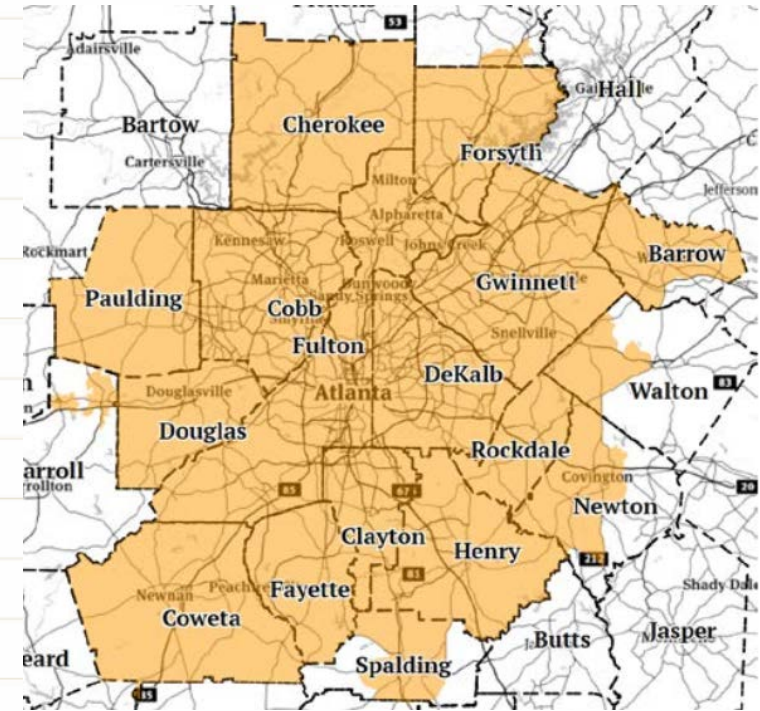
Regions

Region 1: Georgia Communities outside metro-Atlanta

- Grant Funder: Georgia Power
- **Smart Resilience:** Data, Energy, Equity, Sustainability

Region 2: Metro-Atlanta Communities

- Grant Funder: Atlanta Regional Commission Livable Centers Initiative, US Federal Surface Transportation Block Grant
- **Mobility and Equity:** Transportation planning



Region 2 Metro-Atlanta as defined by ARC

Funding

Region 1: Georgia Communities outside metro-Atlanta

- Grant: 80% of your total project up to \$100,000
- Community Cash Match: Minimum 20% of your total project
- Community In-Kind Match: Minimum 20% of your total project

Region 2: Metro-Atlanta Communities

- Grant: 80% of your total project up to \$100,000
- Community Cash Match: Minimum 20% of your total project
- Community In-Kind Match: Voluntary. Recommended 20% of your total project

GT researcher funding supplied by Georgia Tech directly to your research partner up to \$50,000.

Funding Example

- Grant: 80% of your total project up to \$100,000
- Community Cash Match: Minimum 20% of your total project
- Community In-Kind Match: Minimum 20% of your total project

Grant: **\$100,000**

Community Cash Match: **\$25,000**

Total Project Cost: **\$125,000**

Community In-Kind Match: **\$25,000**

Georgia Tech Research Support: **\$50,000**

Key by Color

External Funds

Community Funds

Region 2 – Additional Considerations

- ✓ Projects must be studies or non-capital investments (e.g. development of an app)
- ✓ Projects must tie to transportation in some way
- ✓ Invoices are paid by ARC on a reimbursement basis
- ✓ Grantees will enter into an agreement with Georgia Tech AND a contract with ARC
- ✓ Project sponsor will work with ARC on scope of work and contract
- ✓ ARC must review and approve RFPs and consultant contracts before they are released or executed
- ✓ Per federal requirements, project sponsors/grantees must use competitive procurement procedures to secure a consultant
- ✓ ARC must be included on project team communications and meetings, along with your Georgia Tech research team

ARC Contact for Region 2 Questions:

Elizabeth Sandlin, ESandlin@AtlantaRegional.org

Templates

Application and **Pre-proposal** templates are viewable and downloadable from the *Important Information* section of our website as a Microsoft Word Document.

Please use the templates provided

Application Submissions

Pre-proposal submission:

- 2-page limit
- Due April 24th, 2020, 5pm EDT
- Submission Portal:

https://gatech.co1.qualtrics.com/jfe/form/SV_25Zz9sxA89YeWIB

Application submission:

- 12-page limit
- Due June 12th, 2020, 5pm EDT
- Submission Portal:

https://gatech.co1.qualtrics.com/jfe/form/SV_eya4DEGkYSJ5ZNH

Questions?

Send us an email:
sci2@gatech.edu

Read our FAQ:
<https://smartcities.ipat.gatech.edu/frequently-asked-questions>

Ask a question from our website:

2020 Georgia Smart Communities Challenge



**GEORGIA SMART
COMMUNITIES CHALLENGE**

ENABLING RESILIENCY AND SUSTAINABILITY THROUGH
ACADEMIC RESEARCH AND PUBLIC SECTOR COLLABORATION

The 2020 Georgia Smart Communities Challenge is now open to applicants.

Read more about previous winning projects from the [2018](#) and [2019](#) Georgia Smart communities.

Challenge Highlights

Georgia Smart is a competitive one year program that supports local governments of any size within the State of Georgia by providing grant funding and access to technical

ASK A QUESTION

Name *

Email Address *

Community/Organization *

Title

Question *

SUBMIT

Events

APR
14

2019-20 GA Smart Webinar Series - Webinar #5

Join us on April 14th from Noon until 1pm for the final installment of our 2019-20 GA Smart Webinar Series.

APR
28

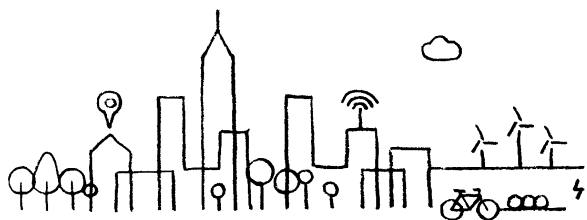
GA Smart Communities Challenge Informational Webinar

Join us to learn more about the 2020 GA Smart Communities Challenge.

SEP
10

GA Smart Fall Workshop

Join us on September 10th for the GA Smart Fall Workshop.



Georgia Smart is RESEARCH-LED SMART COMMUNITIES

