

# GEORGIA SMART COMMUNITIES CHALLENGE

Enabling Resiliency and Sustainability through  
Academic Research and Public Sector Collaboration

## Informational Session #2



28 APRIL 2020  
12-1pm

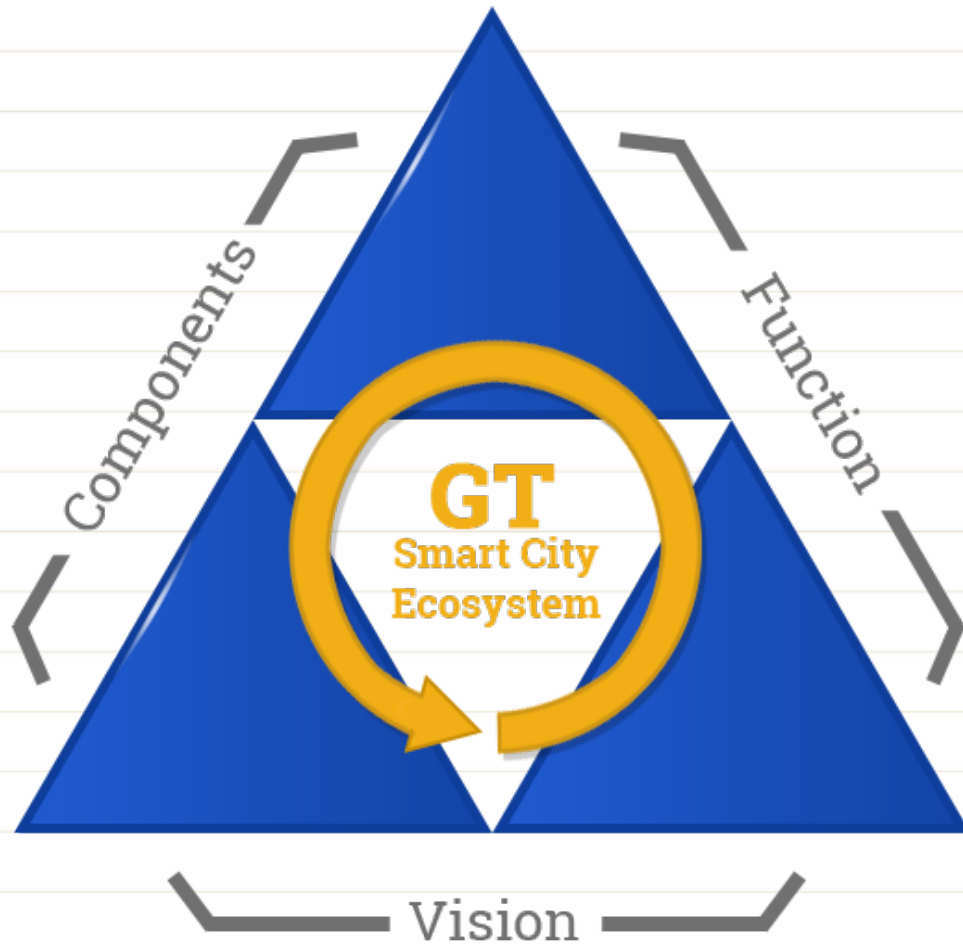
**Social Media Tag**  
**#GeorgiaSmart**



# Webinar Overview

- Georgia Smart
- Application Process
- Q&A

# Smart Cities Framework



# Mission

The **Georgia Smart Communities Challenge** is a grant challenge for communities of any size in the state of Georgia to:

**Empower communities to envision and plan for their  
Smart and Connected Future**

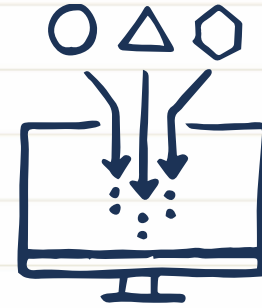
To spur smart community development throughout GA

To position GA as a smart community leader

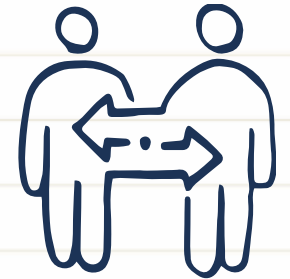
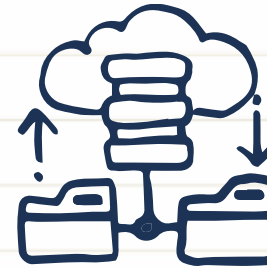
Build a workforce that can lead in technological advance and data-driven  
decision-making

# What is Georgia Smart?

Smart and connected communities rely on **people** and **data** to enable informed decisions **and create a sustainable smart process.**



This starts with a **research-led process** that builds on the fundamental scientific and technical expertise of academics and researchers.



**Georgia Tech** acts to **empower** communities in their journey becoming a smart community and while **building resilience for when the expected and unexpected occurs.**

# Georgia Tech



Georgia Power



Atlanta Regional Commission



# GA Smart Communities

**City of Milton**  
Creating Stronger Communication  
for Sustainable Results



**City of Woodstock**  
Partnering with Autonomous  
Vehicles for a Smart Corridor

**City of Chamblee**  
Joining Together for a  
Strategic SAV Program



**Columbus Consolidated  
Government**  
Using Data Sharing  
to Improve Infrastructure



**City of Albany**  
Employing Data Analytics  
for a Better Housing System



**Gwinnett County**  
Connecting Tech for  
Optimal Performance



**Chatham County**  
Piloting Tools to Help Stakeholders  
During Natural Disasters



**Macon-Bibb Consolidated County**  
Giving the People Better Access  
to Local Government



# GA Smart Communities 2018 and 2019 Teams



# GA Smart Value



1. Up to **\$100k** in grant funds
2. Up to **\$50k** in Georgia Tech research support
3. Cohort of fellow Georgia communities
4. Expert led workshops on smart cities topics
5. Smart Community Corps summer support
6. Marketing-communications outreach
7. GA Smart partners support and connections
8. Smart development network and journey.....

# Smart Ecosystem

**Communities representing 2/3 of  
Georgia population engaged**

**1,100** Livestream views of the 2019 GA Smart Winners Announcement

**500+** Attendees at GA Smart Workshops

**5,000** Newsletter Subscribers

**1000+** Webinar Views

**50+** GT Researchers and professors profiled

# Data

## Diversity of Data Collected & Leveraged

- 10** years of utility and housing data in Albany
- 44** smart sea level sensors in Chatham Co.
- 15** Fire & EMS vehicles tracked in Gwinnett Co.
- 2** Multisensor Array of Things installed in Columbus
- Hundreds** of survey responses from citizens

# GT Researchers



## Diversity of Disciplines

**School of Architecture**

**School of City and Regional Planning**

**School of Computer Science**

**School of Civil & Environmental Engineering**

**School of Earth & Atmospheric Science**

**School of Public Policy**

# Workforce Development

## Smart Community Corps Dataworks

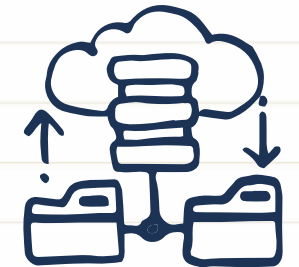
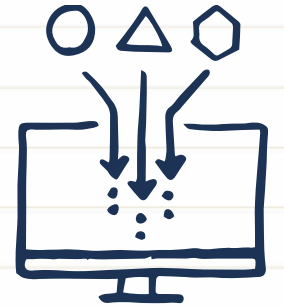
Summer funding

Student work on smart community projects

GT researcher mentorship

Microsoft | EPA | Community Foundation of Central Georgia

Center for Serve-Learn-Sustain | Center for Career Discovery & Development |  
Student Government Association



# Onward and Upward

## Driven by People

**30+ Community Stakeholder Engagement Meetings**  
**\$2M+ in Project Continuation Funds**  
**Education outreach with curriculum**

Making it Happen  
develop a smart process  
together, we look at a set of  
steps that focuses on a present  
problem while looking for a  
sustainable process that grows  
and adapts over time.

#### Understand Your People.

Building a smart and  
connected community  
starts with the people  
and understanding  
their goals for their  
community.

#### Identify the Data.

Data are central to the  
smart and connected  
community. A smart process  
relies on knowing what data  
you have, what data you need,  
and how to connect the right  
people to the right data.

#### Create Partnerships.

Partnerships are built  
on a united vision and  
strong understanding of the  
roles and responsibilities  
of the respective parties.  
They are cemented on trust  
and knowing the parties are  
committed to the long run.

Through  
stage  
research  
make the  
and g  
tech

#### Macon-Bibb Giving the People Better Access to Local Government

Macon-Bibb County has  
several existing mobile  
applications and browser-based  
smart solutions, but these services  
are currently out of reach of  
economically disadvantaged  
neighbors who lack access  
to high-speed internet or  
smartphone devices.  
SmartNeighborhoodsMBC  
promotes equity in economically  
stressed neighborhoods by  
placing Smart Kiosks in strategic  
locations such as community  
centers, libraries, recreation  
and public buildings to help  
underprivileged citizens  
better access and engage local  
government departments.

# GEORGIA SMART COMMUNITIES CHALLENGE

Enabling Resiliency and  
Sustainability through Academic Research and  
Public Sector Collaboration



FIELD GUIDE

<http://gatech.bccdev.com/>

Partnerships  
Working with partners  
is a process to figure  
out when to make  
decisions as a project matures  
and when to make  
adjustments to different  
needs to sustain in the long  
term. Management needs to  
be a careful transition.



#### Chatham Piloting To Help Stakeholders During Natural Disasters

Chatham County will design,  
develop, and test a pilot sensor  
network for measuring sea level  
flood risk in order to inform  
government officials and other  
key stakeholders in real time  
during natural disasters  
and storms. This project  
depends on the partnership  
between different people:  
community groups, local and  
county government officials,  
and those helping with K-12  
education initiatives. The team  
is conducting research with  
help from Georgia Tech's Earth  
and Atmospheric Sciences  
department as well as the  
Computing department. The  
pilot network will help to improve  
flood warnings, emergency  
response action plans, and  
prepare for future  
disasters.

# Georgia Smart Request for Proposals



## Website:

<https://smartcities.ipat.gatech.edu/2020-georgia-smart-communities-challenge>

## Official RFP is the **Georgia Smart Program Guide**

- Available on the website listed above in the *Important Information* section

## Important Information

- Interested communities should review the [Georgia Smart Program Guide](#) and check our [Frequently Asked Questions](#) page for details about the 2020 challenge.
- Georgia Smart will sponsor a cohort of between 2 and 4 teams this year from the state of Georgia, each executing on their own project plan.
- Grant funding has been increased to up to \$100,000.
- Georgia Tech researcher funding has also been increased to up to \$50,000.
- Applicants must partner with a Georgia Tech researcher. Access a list of [GT researchers](#) available to partner with your community. Add your profile to our list of GT research partners by emailing us at [sci2@gatech.edu](mailto:sci2@gatech.edu).
- Applicants should use the Application Template to complete their application: [View](#) | [Download](#)
- Georgia Smart is accepting Pre-proposals this year in an effort to assist communities in connecting with Georgia Tech researchers. Applicants should use the Pre-proposal template available here: [View](#) | [Download](#)

## Important Information

- Interested communities should review the [Georgia Smart Program Guide](#) and check our [Frequently Asked Questions](#) page for details about the 2020 challenge.
- Georgia Smart will sponsor a cohort of between 2 and 4 teams this year from the state of Georgia, each executing on their own project plan.
- Grant funding has been increased to up to \$100,000.
- Georgia Tech researcher funding has also been increased to up to \$50,000.
- Applicants must partner with a Georgia Tech researcher. Access a list of [GT researchers](#) available to partner with your community. Add your profile to our list of GT research partners by emailing us at [sci2@gatech.edu](mailto:sci2@gatech.edu).
- Applicants should use the Application Template to complete their application: [View](#) | [Download](#)
- Georgia Smart is accepting Pre-proposals this year in an effort to assist communities in connecting with Georgia Tech researchers. Applicants should use the Pre-proposal template available here: [View](#) | [Download](#)

- **Challenge Key Dates**

- ◆ **Challenge Launch: March 17th, 2020**

- ~~◆ **Informational Webinar (1st chance): April 6th, 2020 | 12pm-1pm**~~

- ~~◆ **Optional Pre-proposals Due: April 24th, 2020**~~

- ◆ **Informational Webinar (2nd chance): April 28th, 2020 | 12pm-1pm**

- ◆ **Applications Due: June 12th, 2020**

- ◆ **Winning Projects Announced: Summer, 2020**

# RFP key requirements

- Led by **local government entity** in the state of Georgia and have a letter of support from a community leader.
- Include a **Georgia Tech researcher** with a related research project outlined
- Verify **documentation of source of funds** for the community match and provide the expected method for the in-kind match.

# GT Research Partner Requirement

## Connect with a GT researcher

- Part of the Proposal team
- ~~• **Submit a Pre-proposal by April 24<sup>th</sup>**~~
  - Pre-proposal submission details are outlined in the Program Guide
- **Review the research faculty list:**  
<https://smartcities.ipat.gatech.edu/research-faculty>

# RFP Recommendations

- Represent **community partnerships** and include letters of support or letters of understanding
- Address a **community need**, be inclusive, and think long term.
- NOT solely purchase technology/ hardware/capital assets, but can use funds to purchase such devices for the purposes of completing pilot studies of relevant technology.

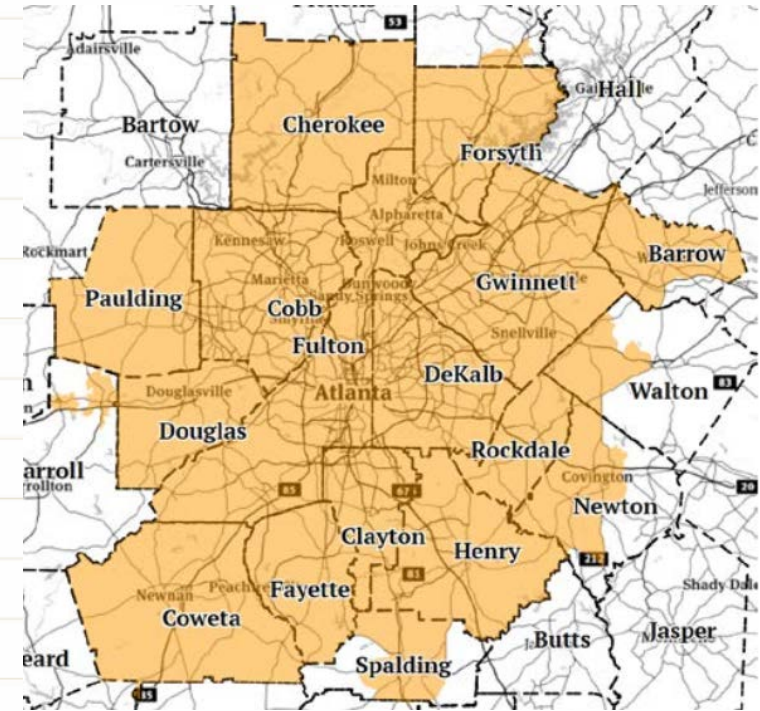
# Regions

## Region 1: Georgia Communities outside metro-Atlanta

- Grant Funder: Georgia Power
- **Smart Resilience:** Data, Energy, Equity, Sustainability

## Region 2: Metro-Atlanta Communities

- Grant Funder: Atlanta Regional Commission Livable Centers Initiative, US Federal Surface Transportation Block Grant
- **Mobility and Equity:** Transportation planning



Region 2 Metro-Atlanta as defined by ARC

# Funding

## Region 1: Georgia Communities outside metro-Atlanta

- Grant: 80% of your total project up to \$100,000
- Community Cash Match: Minimum 20% of your total project
- Community In-Kind Match: Minimum 20% of your total project

## Region 2: Metro-Atlanta Communities

- Grant: 80% of your total project up to \$100,000
- Community Cash Match: Minimum 20% of your total project
- Community In-Kind Match: Voluntary. Recommended 20% of your total project

**GT researcher funding supplied by Georgia Tech directly to your research partner up to \$50,000.**

# Funding Example

- Grant: 80% of your total project up to \$100,000
- Community Cash Match: Minimum 20% of your total project
- Community In-Kind Match: Minimum 20% of your total project

**Grant:** **\$100,000**

**Community Cash Match:** **\$25,000**

**Total Project Cost:** **\$125,000**

**Community In-Kind Match:** **\$25,000**

**Georgia Tech Research Support:** **\$50,000**

Key by Color

**External Funds**

**Community Funds**

# Region 2 – Additional Considerations

- ✓ Projects must be studies or non-capital investments (e.g. development of an app)
- ✓ Projects must tie to transportation in some way
- ✓ Invoices are paid by ARC on a reimbursement basis
- ✓ Grantees will enter into an agreement with Georgia Tech AND a contract with ARC
- ✓ Project sponsor will work with ARC on scope of work and contract
- ✓ ARC must review and approve RFPs and consultant contracts before they are released or executed
- ✓ Per federal requirements, project sponsors/grantees must use competitive procurement procedures to secure a consultant
- ✓ ARC must be included on project team communications and meetings, along with your Georgia Tech research team

ARC Contact for Region 2 Questions:

Elizabeth Sandlin, [ESandlin@AtlantaRegional.org](mailto:ESandlin@AtlantaRegional.org)

# Template

**Application** template is viewable and downloadable from the *Important Information* section of our website as a Microsoft Word Document.

**Please use the template provided**

# Application Submission

## **Application** submission:

- 12-page limit
- Due June 12<sup>th</sup>, 2020, 5pm EDT
- Submission Portal:

[https://gatech.co1.qualtrics.com/jfe/form/SV\\_eya4DEGkYSJ5ZNH](https://gatech.co1.qualtrics.com/jfe/form/SV_eya4DEGkYSJ5ZNH)

# Questions?

Send us an email:  
[sci2@gatech.edu](mailto:sci2@gatech.edu)

Read our FAQ:  
<https://smartcities.ipat.gatech.edu/frequently-asked-questions>

Ask a question from our website:

**2020 Georgia Smart Communities Challenge**



**GEORGIA SMART COMMUNITIES CHALLENGE**

ENABLING RESILIENCY AND SUSTAINABILITY THROUGH  
ACADEMIC RESEARCH AND PUBLIC SECTOR COLLABORATION

**The 2020 Georgia Smart Communities Challenge is now open to applicants.**

Read more about previous winning projects from the [2018](#) and [2019](#) Georgia Smart communities.

**Challenge Highlights**

Georgia Smart is a competitive one year program that supports local governments of any size within the State of Georgia by providing grant funding and access to technical

**ASK A QUESTION**

Name \*

Email Address \*

Community/Organization \*

Title

Question \*

SUBMIT

# Events

MAY  
7

## #SMARTer Together Webinar Series - Webinar #1

Join us for Dr. Yeo's webinar entitled "Soft Wearable Bioelectronics for Smart and Connected First Responders"

MAY  
14

## #SMARTer Together Webinar Series - Webinar #2

Join us for Dr. Garrow and Dr. Dhongde's webinar entitled "Importance of Investing in Rural Transit in Georgia."

MAY  
21

## #SMARTer Together Webinar Series - Webinar #3

Join us for Dr. Clifford A. Lipscomb's webinar entitled "Post COVID-19 Expectations in Economic Development and Real Estate."

MAY  
28

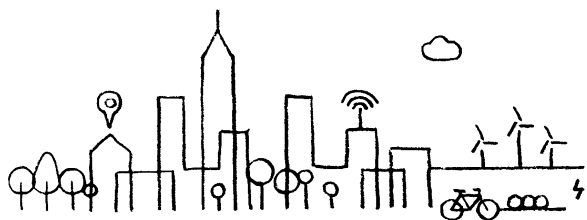
## #SMARTer Together Webinar Series - Webinar #4

Join Dr. Montreuil for his webinar entitled "Toward Efficient Pandemic Supply Chain Readiness and Response"

SEP  
10

## GA Smart Fall Workshop

Join us on September 10th for the GA Smart Fall Workshop.



# Georgia Smart is RESEARCH-LED SMART COMMUNITIES

