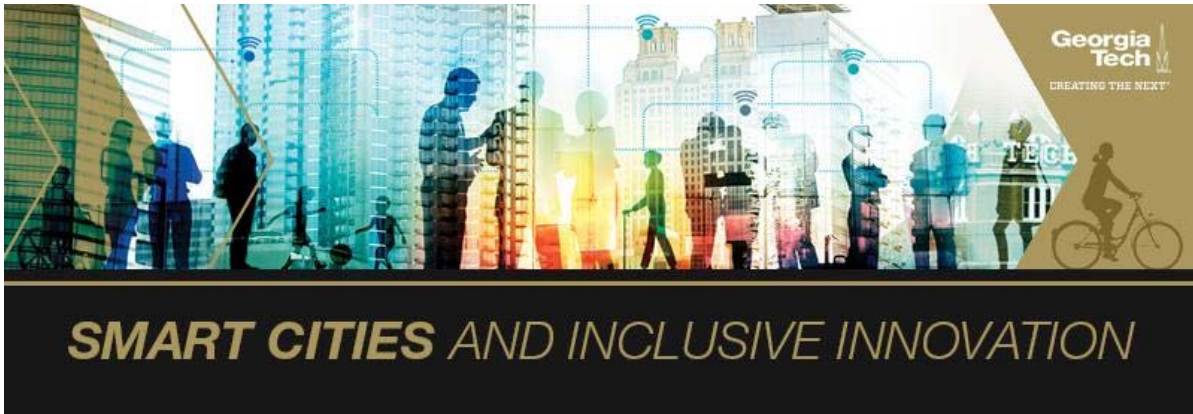


April 2020 eNewsletter



## GA Smart Launches 2020 Smart Communities Challenge

- Do you want to explore how technology and data can support your community priorities and address common challenges?
- Do you want to work in partnership with a Georgia Tech researcher to pilot a project?
- Are you looking for a cohort of GA peers to engage with in your smart community work?

Following the success of our [2018](#) and [2019](#) GA Smart Classes, we are pleased to announce the next Challenge round for all Georgia Communities!

This continues to support Georgia Tech's mission of ' **developing leaders who advance technology and improve the human condition** ' and Georgia's larger goal as a technology and innovation leader for the whole state.

**To learn more about the Georgia Smart Communities Challenge opportunity for 2020, we invite you to join one of our Informational Webinars on [April 6th](#) and [April 28th](#) .**

[2020 Challenge Info Here](#)



## Data-Driven Research Aims to Solve First/Last-Mile Problem

Together with the city of Atlanta and Georgia Tech, the [Socially Aware Mobility Lab](#) uses data and machine learning to look at how on-demand multimodal transit could improve traffic congestion and mobility inequalities.



[Read Article Here](#)

## CEE Researchers Study Inland Flood Risks with AT&T



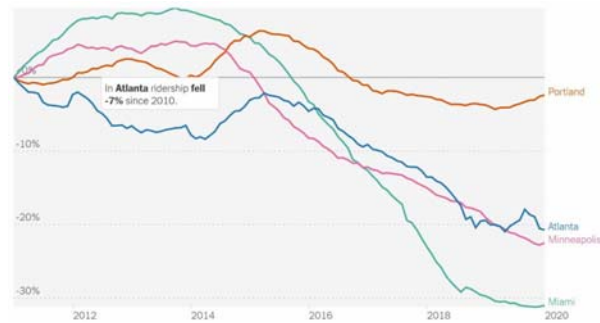
Georgia Tech is one of five universities that has been selected to participate in [AT&T's Climate Resiliency Community Challenge](#). The multi-disciplinary team has been awarded \$50,000 to study flood resilience in the Southeast using new climate data from the Argonne National Laboratory. The researchers will assess risks and help local governments with climate adaptation and resilience planning. The GT team is comprised of Professor [A djo Amekudzi-Kennedy](#) and Associate Professor [Baabak Ashuri](#) from the School of Civil and Environmental Engineering; [Russell Clark](#), a senior research scientist in the School of Computer Science; [Brian Woodall](#), a professor in the Sam Nunn School of International Affairs; along with undergraduate, graduate and PhD students.

[Learn More Here](#)

## The Mystery of the Missing Bus Riders

Cities are growing, and more people are working. Why aren't they taking the bus? Georgia Tech researchers [Kari Watkins](#) and [Simon Berrebi](#) who have been studying the decline of bus ridership have found a [demographic clue](#) .

[Read Article Here](#)



**Falling Ridership in Atlanta, Miami and Portland**

## GA Smart Webinar Series

Join us on April 14th for our 5th installment of the GA Smart Webinar Series:

[Arthi Rao](#) , Center for Quality Growth and Regional Planning

*Improving Equity through Smart Community Planning*

[Register Here](#)



## Past Webinars

**Webinar #1** - [Christopher Le Dantec](#) , LMC  
*Designing the Infrastructures of Digital Civic*

**Webinar #2** - [Ramachandra Sivakumar](#) , CRP  
*Transforming Today's Cities into Smart Cities - Challenges and Opportunities*

**Webinar #3** - [Kari Watkins](#) , CEE  
*Using Technology to Transform Multi-Modal Transportation*

**Webinar #4** - [John Taylor](#) , CEE  
*Smart City Digital Twins*

## In the News:

[Winners Named in IDC Smart Cities North America Awards](#)

[Three Cool Projects Driving Georgia Into the Future](#)

[The 14 Pillars of a Smart City](#)

## Upcoming Events:

9/10 - [GA Smart Fall Workshop](#)

11/16-19 - [Smart Cities Connect](#)

## Thank You to Our GA Smart Partners!



We believe all communities can be smart. Through the integration of technology and data, communities of various sizes, geographies, and development can be empowered to improve their quality of life. That is why we have pulled together a cross-sectoral partnership to raise awareness and knowledge, develop networks, and implement smart projects. This monthly newsletter is part of this greater effort!

### CONNECT WITH US!

[Visit the SCII Website!](#)

[Sign up for our newsletter & updates!](#)



*Copyright ©2020 Georgia Institute of Technology, All rights reserved.*